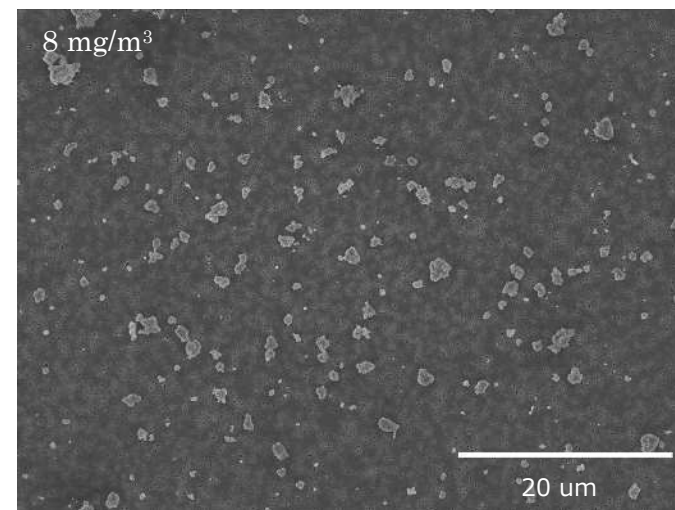
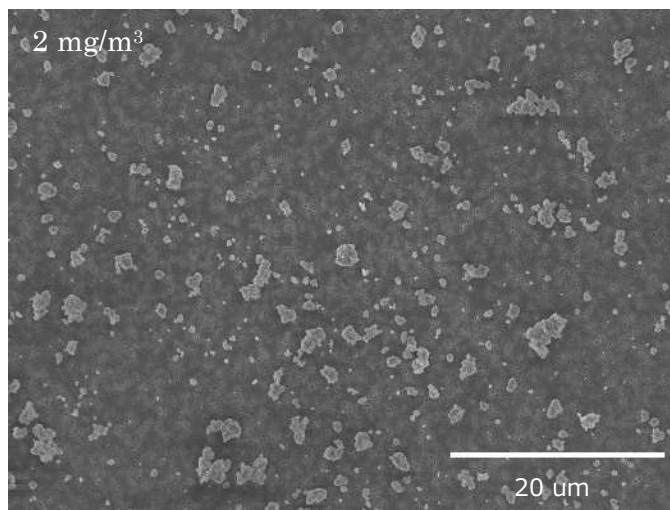
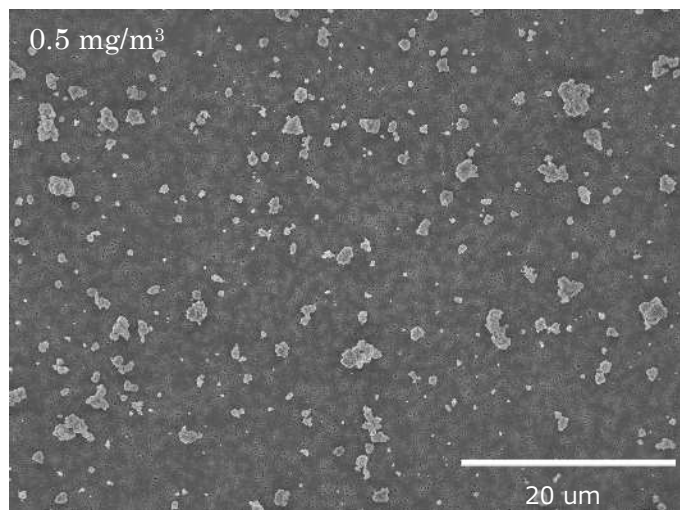


酸化チタン（ナノ粒子、アナターゼ型）の
ラットを用いた吸入によるがん原性試験報告書

試験番号：0883

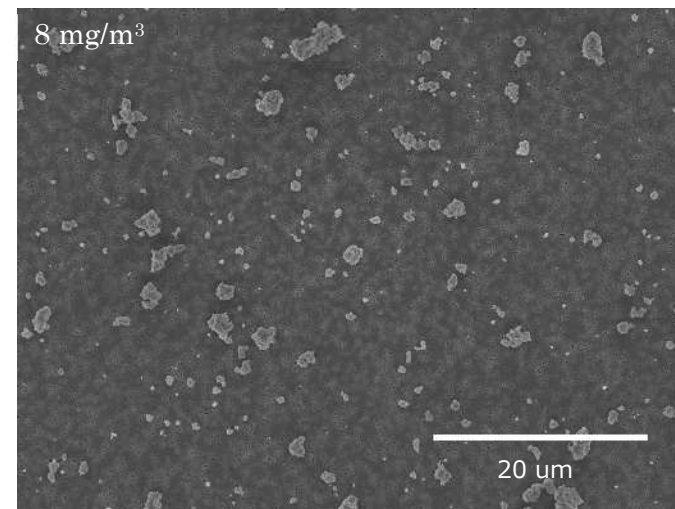
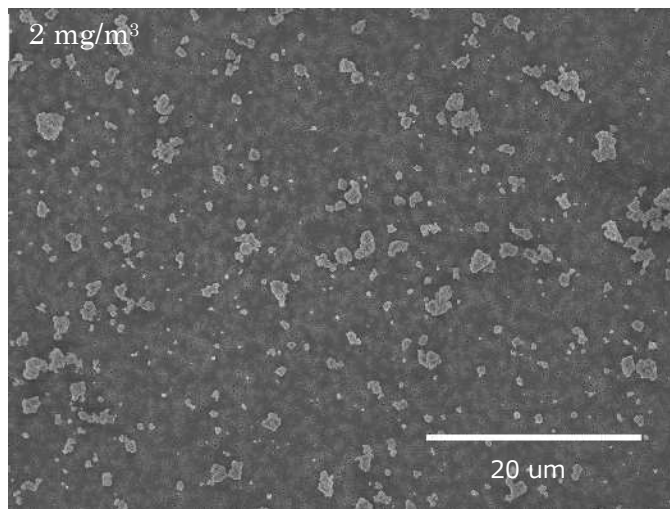
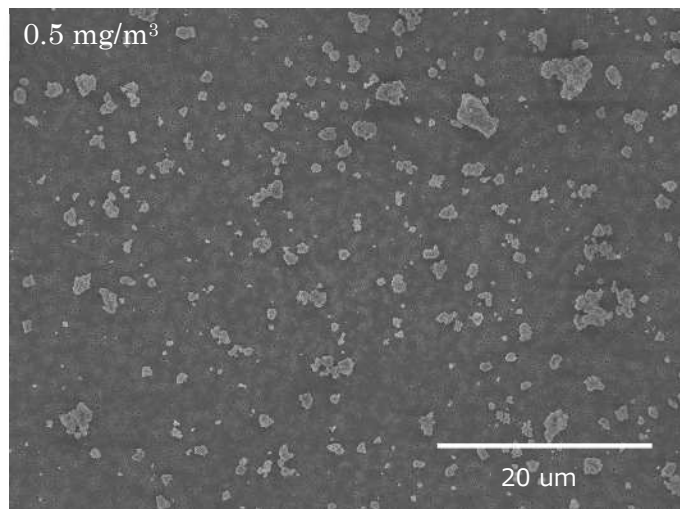
PHOTOGRAPHS

PHOTOGRAPH 1 SEM IMAGE OF TITANIUM DIOXIDE COLLECTED FROM EXPOSURE CHAMBER:ADMINISTRATION AT 1 WEEK

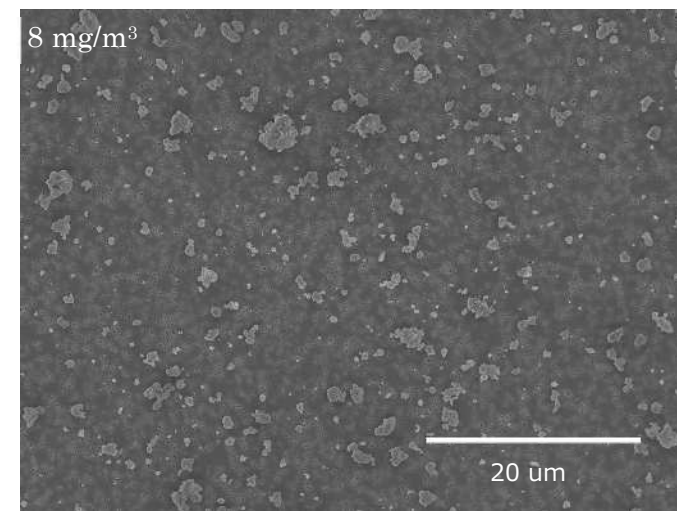
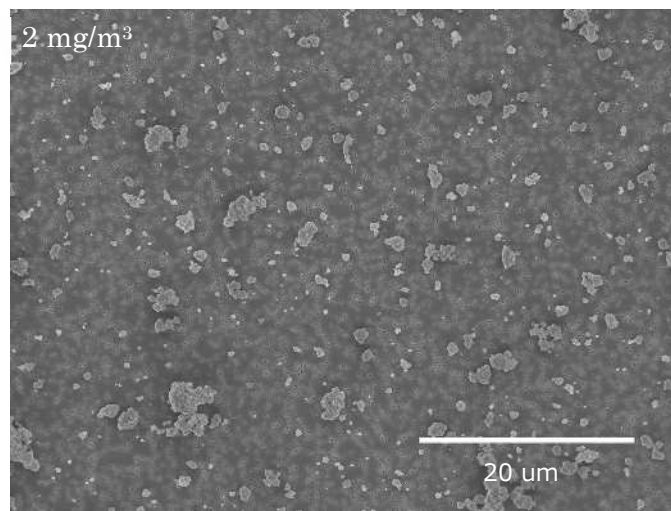
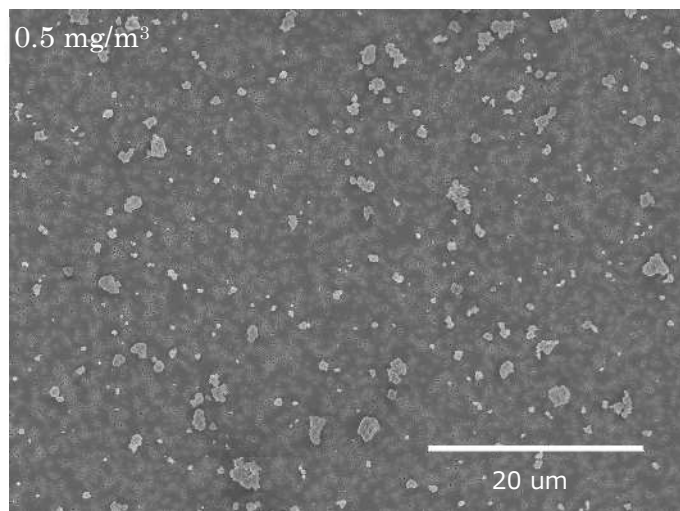


PHOTOGRAPH 2

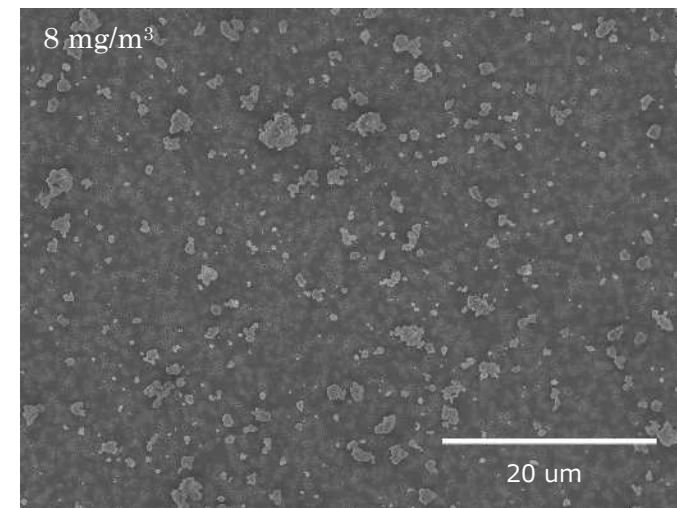
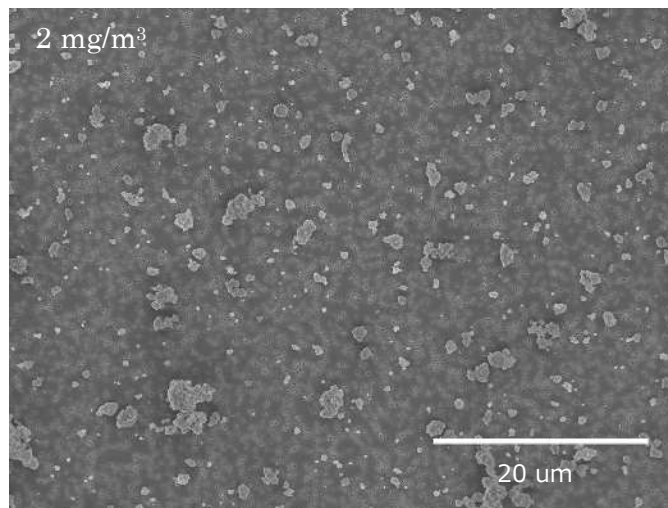
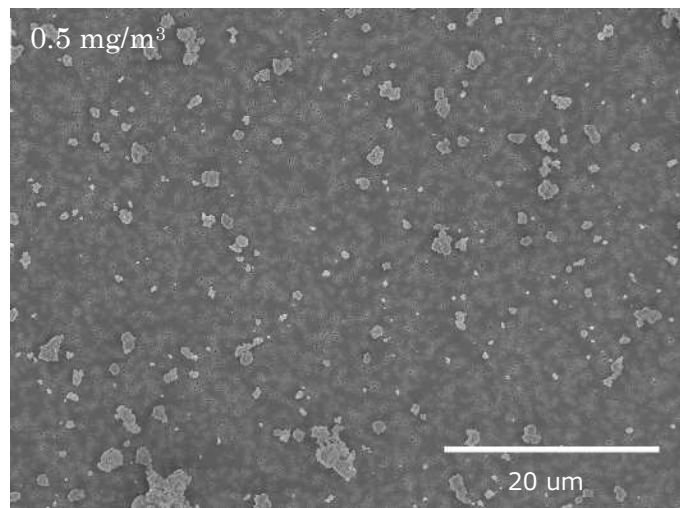
SEM IMAGE OF TITANIUM DIOXIDE COLLECTED FROM EXPOSURE CHAMBER: ADMINISTRATION AT 14 WEEKS



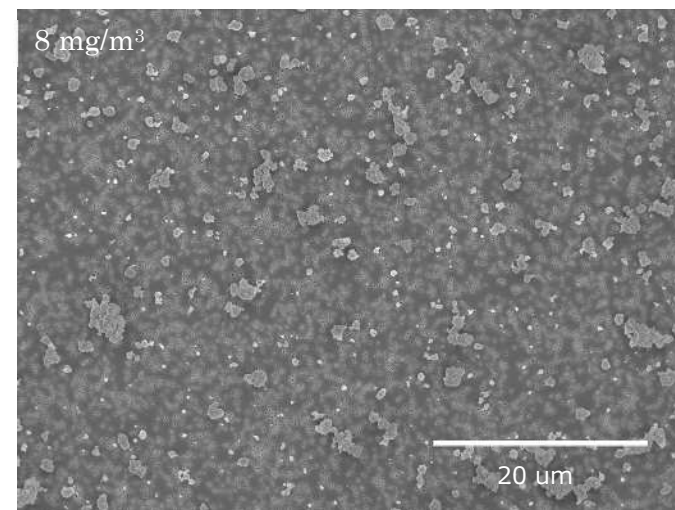
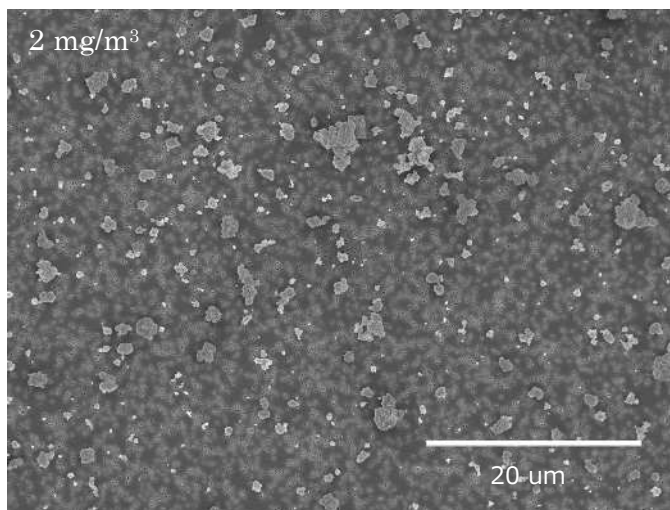
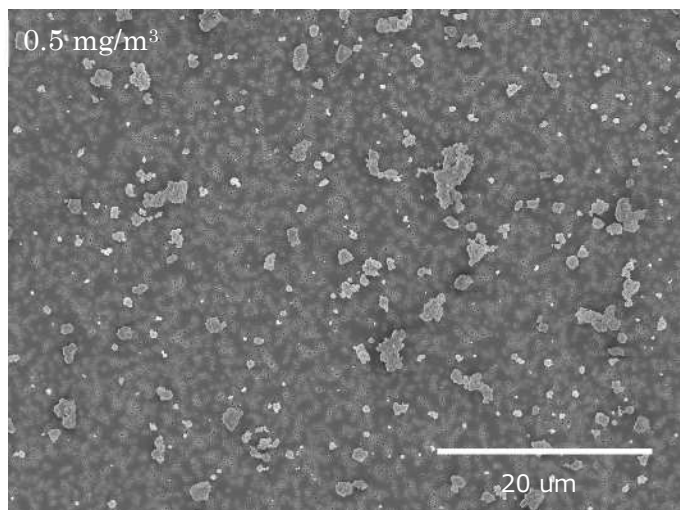
PHOTOGRAPH 3 SEM IMAGE OF TITANIUM DIOXIDE COLLECTED FROM EXPOSURE CHAMBER:ADMINISTRATION AT 27 WEEKS



PHOTOGRAPH 4 SEM IMAGE OF TITANIUM DIOXIDE COLLECTED FROM EXPOSURE CHAMBER:ADMINISTRATION AT 40 WEEKS

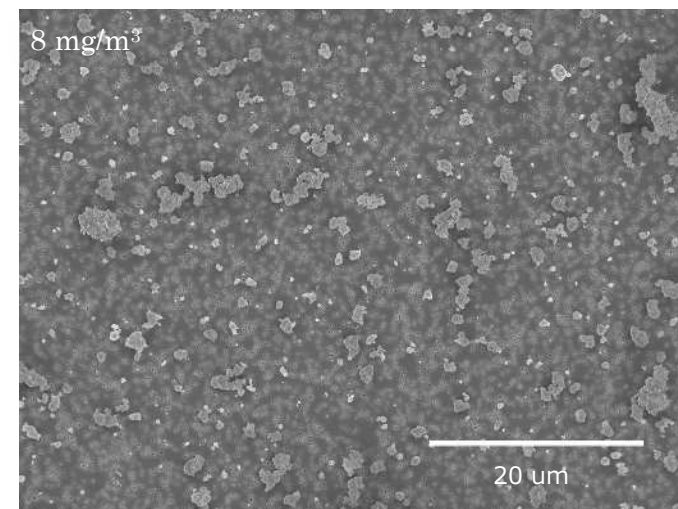
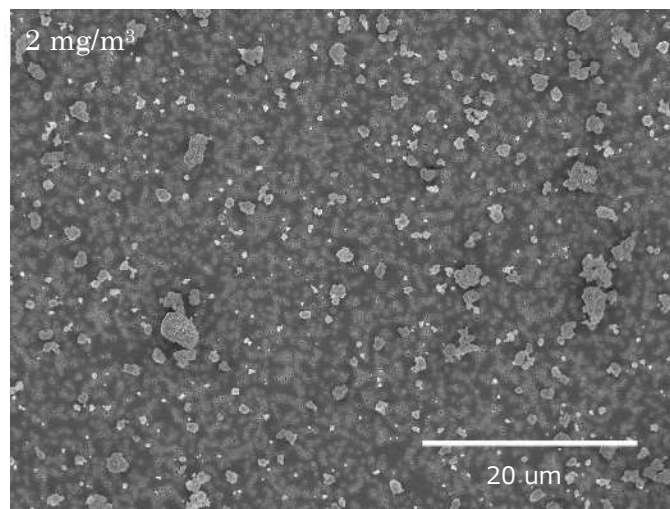
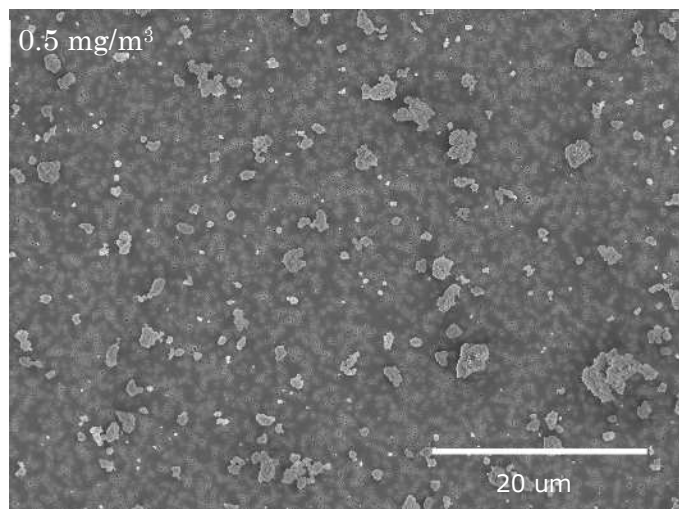


PHOTOGRAPH 5 SEM IMAGE OF TITANIUM DIOXIDE COLLECTED FROM EXPOSURE CHAMBER:ADMINISTRATION AT 53 WEEKS

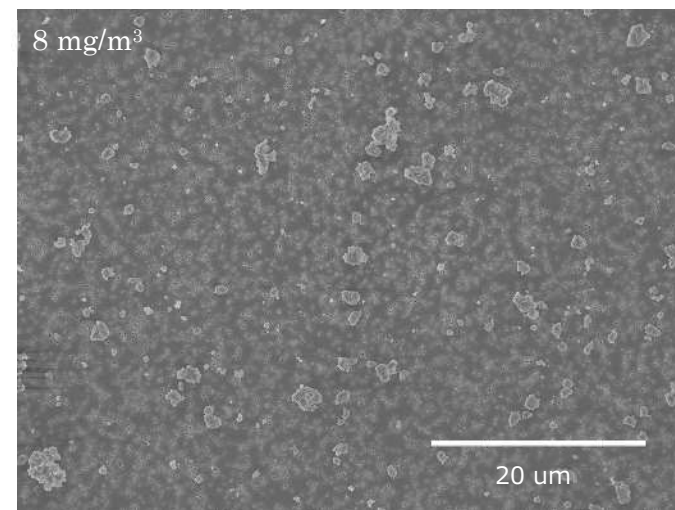
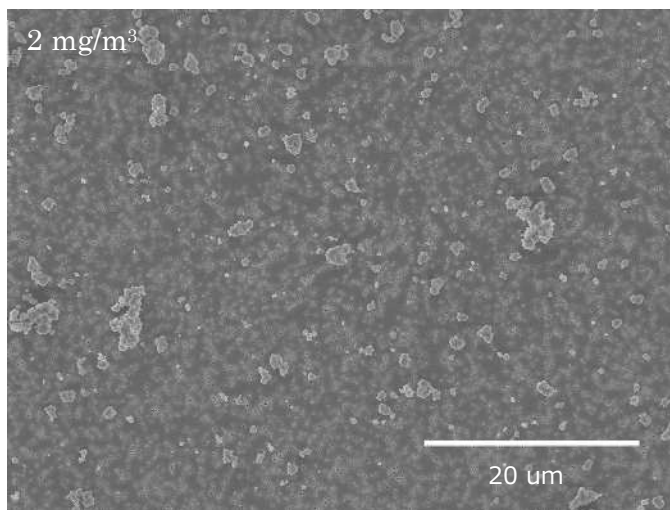
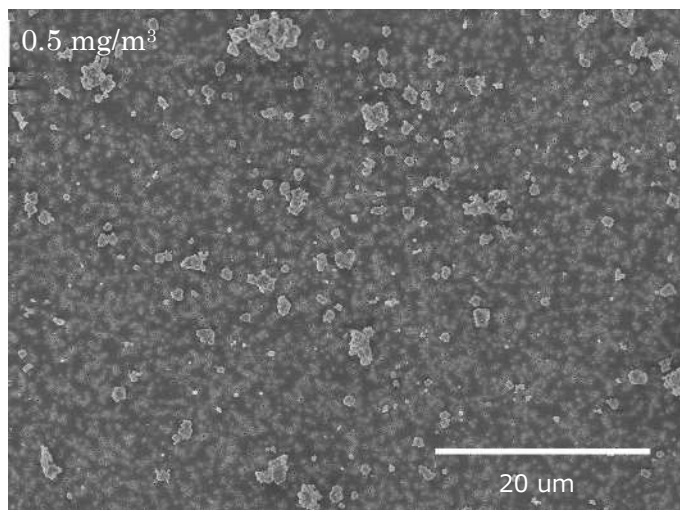


PHOTOGRAPH 6

SEM IMAGE OF TITANIUM DIOXIDE COLLECTED FROM EXPOSURE CHAMBER: ADMINISTRATION AT 66 WEEKS

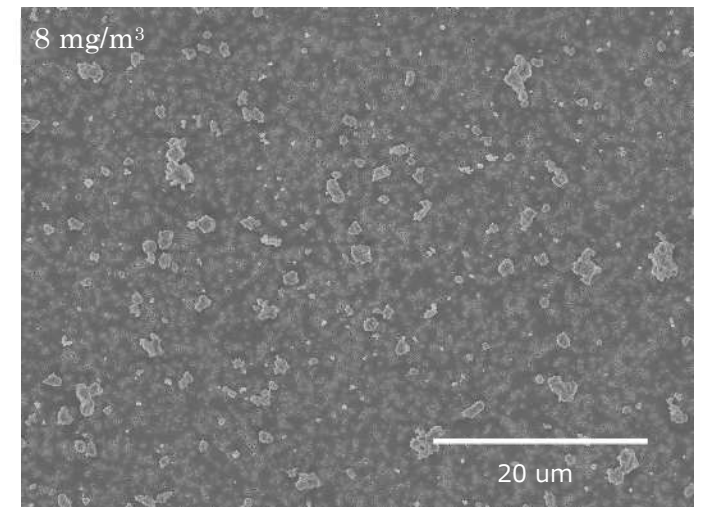
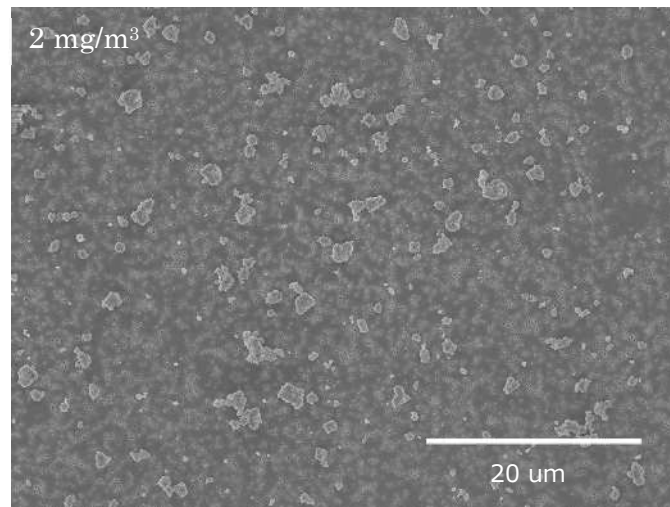
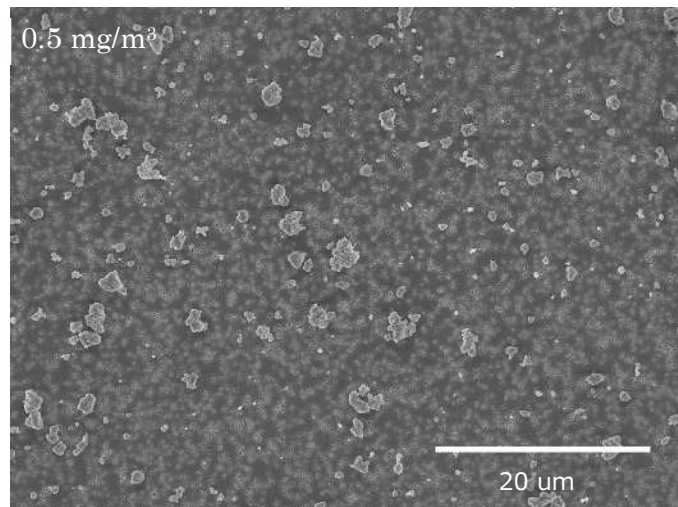


PHOTOGRAPH 7 SEM IMAGE OF TITANIUM DIOXIDE COLLECTED FROM EXPOSURE CHAMBER:ADMINISTRATION AT 79 WEEKS

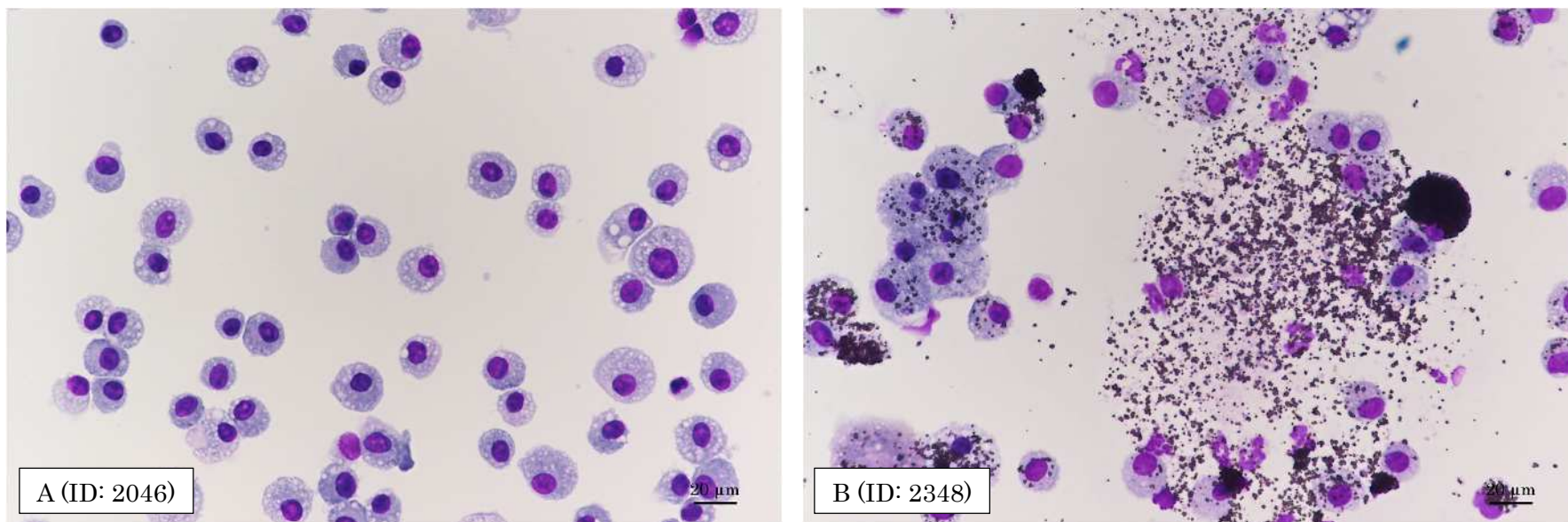


PHOTOGRAPH 8

SEM IMAGE OF TITANIUM DIOXIDE COLLECTED FROM EXPOSURE CHAMBER: ADMINISTRATION AT 92 WEEKS



PHOTOGRAPH 9 REPRESENTATIVE IMAGES OF BALF (May-Grunewald-Giemsa staining)



Healthy alveolar macrophages were observed in BALF of control group (A). On the other hand, abundant neutrophils and destroyed or hypertrophic alveolar macrophages with Titanium dioxide particles were observed in BALF of 8 mg/m³ group (B).



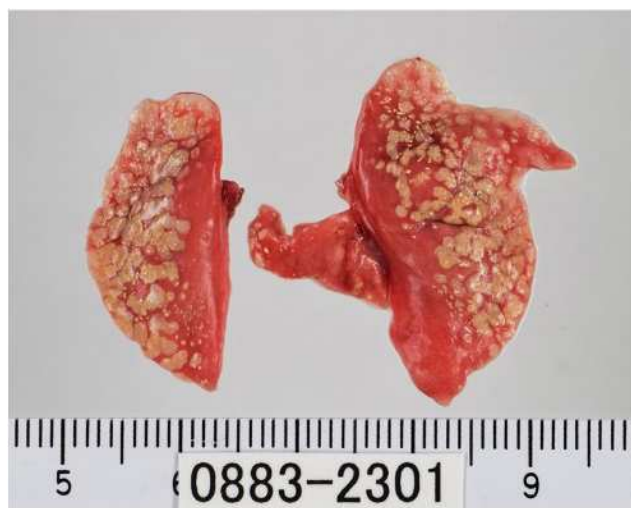
Photograph 10
Lung: Macroscopic representative image
Female, Control, Animal No. 2008



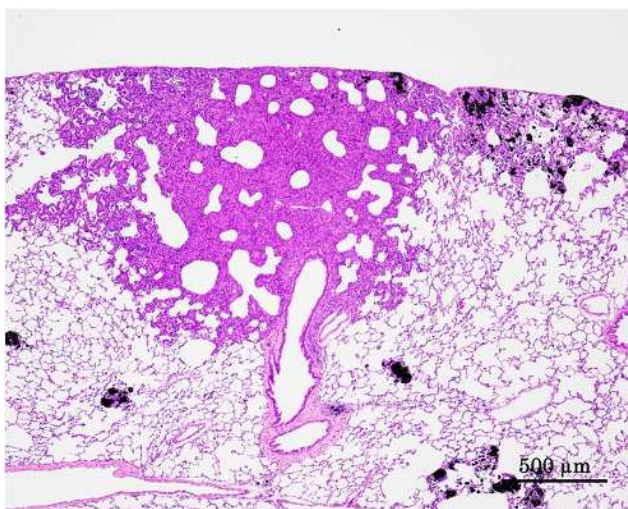
Photograph 11
Lung: Macroscopic representative image
Female, 0.5 mg/m³, Animal No. 2102



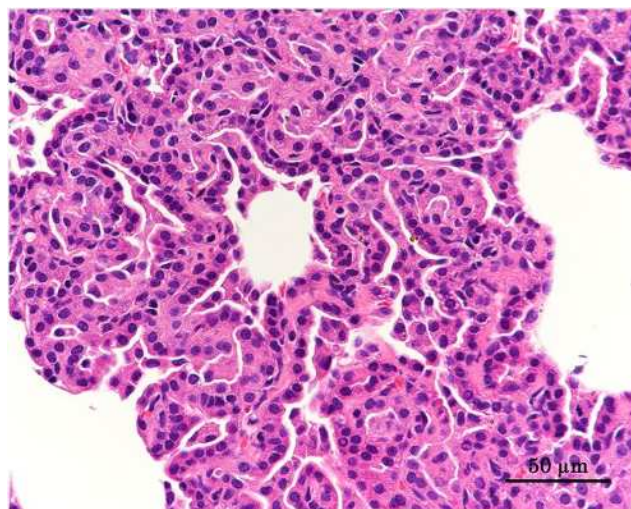
Photograph 12
Lung: Macroscopic representative image
Female, 2 mg/m³, Animal No. 2209



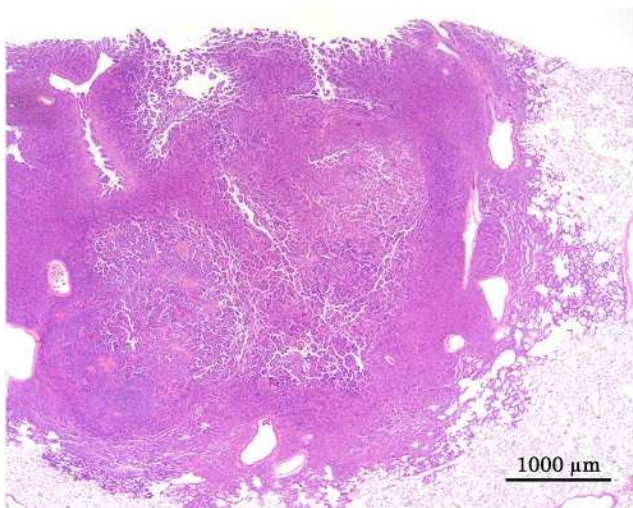
Photograph 13
Lung: Macroscopic representative image
Female, 8 mg/m³, Animal No. 2301



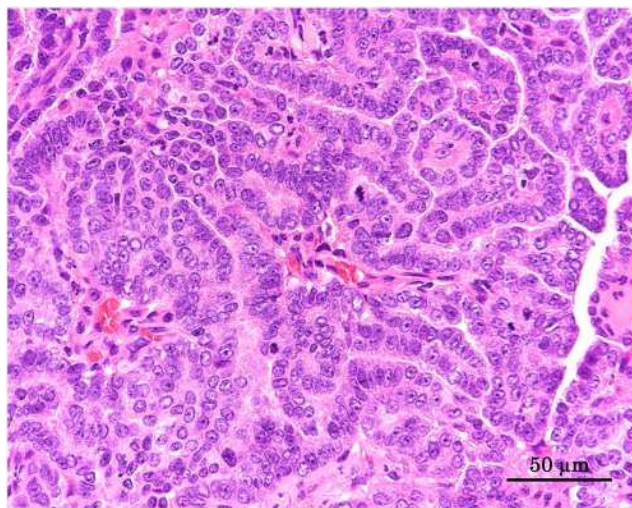
Photograph 14
Lung: Bronchiolar-alveolar adenoma
Female, 8 mg/m³, Animal No. 2319



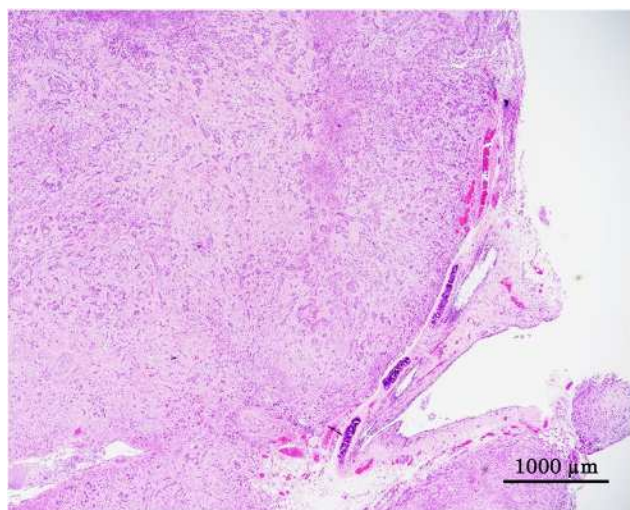
Photograph 15
High magnification of Photograph 13



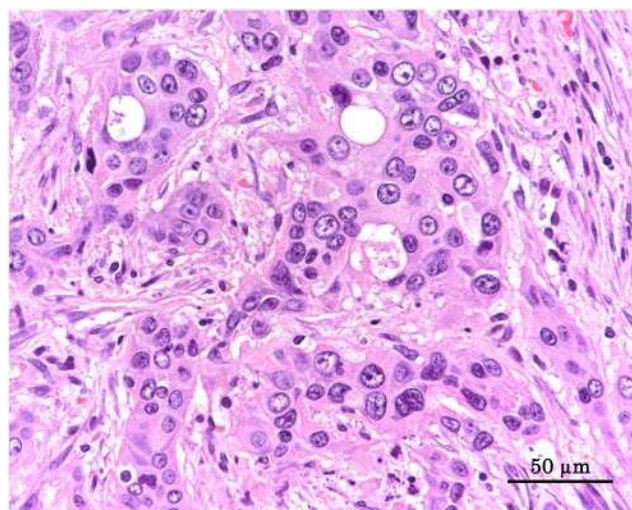
Photograph 16
Lung: Bronchiolar-alveolar carcinoma
Male, 8 mg/m³, Animal No. 1319



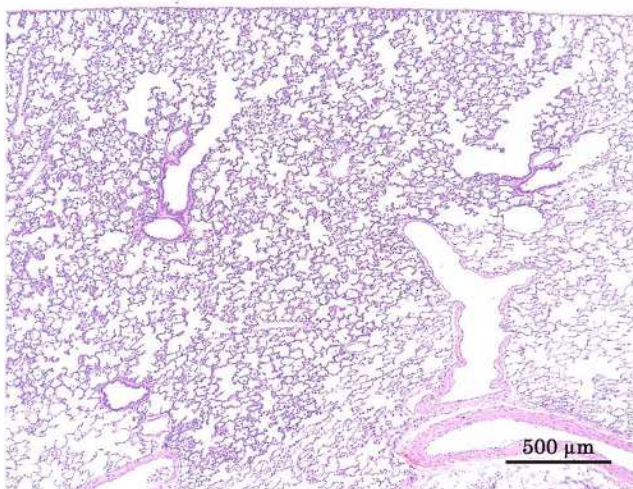
Photograph 17
High magnification of Photograph 15



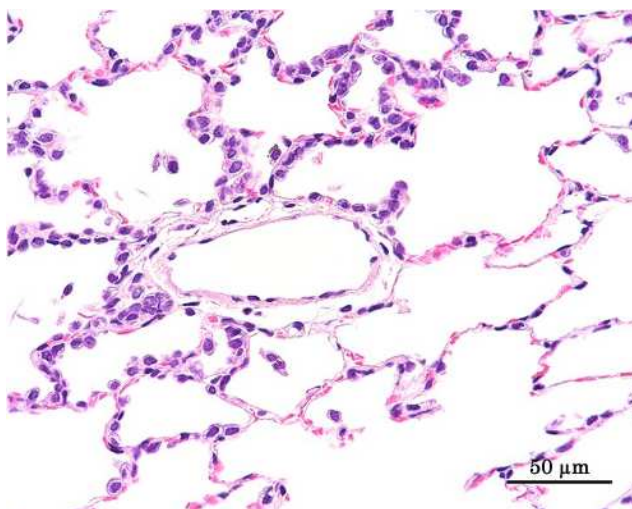
Photograph 18
Lung: Adenosquamous carcinoma
Female, 2 mg/m³, Animal No. 2243



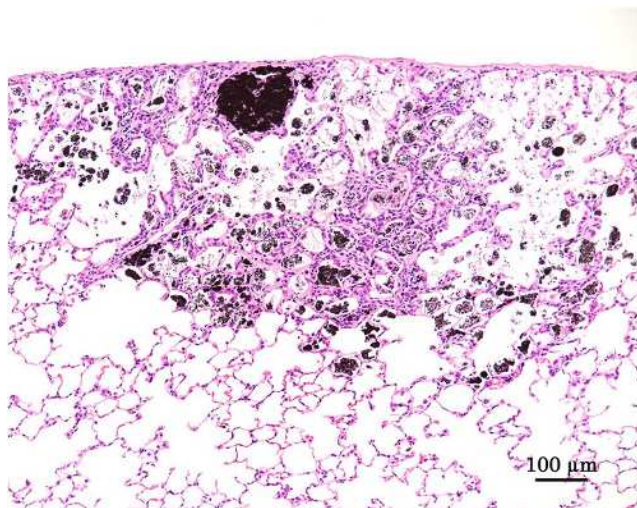
Photograph 19
High magnification of Photograph 17



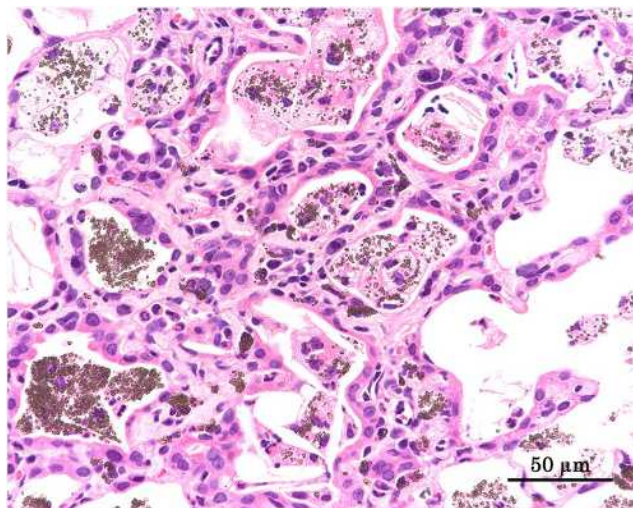
Photograph 20
Lung: Bronchiolar-alveolar cell hyperplasia
Female, 2 mg/m³, Animal No. 2211



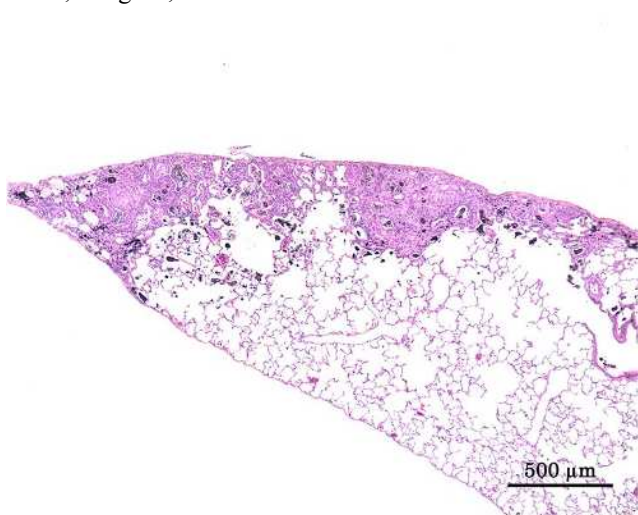
Photograph 21
High magnification of Photograph 19



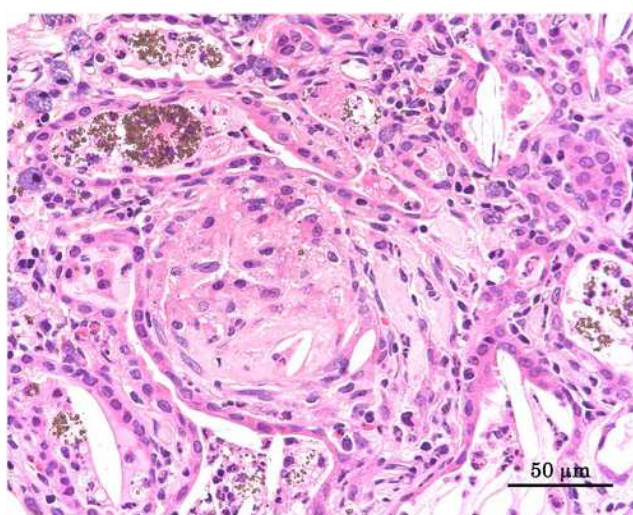
Photograph 22
Lung: Alveolar hyperplasia, particle-induced
Male, 8 mg/m³, Animal No. 2310



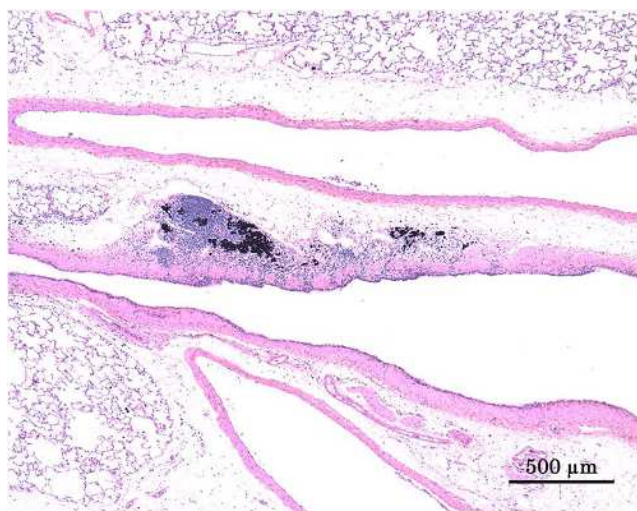
Photograph 23
High magnification of Photograph 21



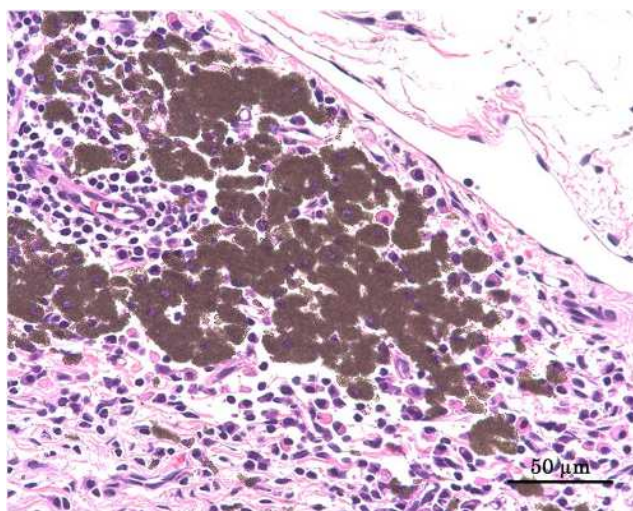
Photograph 24
Lung: Fibrosis, alveolar wall
Female, 2 mg/m³, Animal No. 2304



Photograph 25
High magnification of Photograph 23



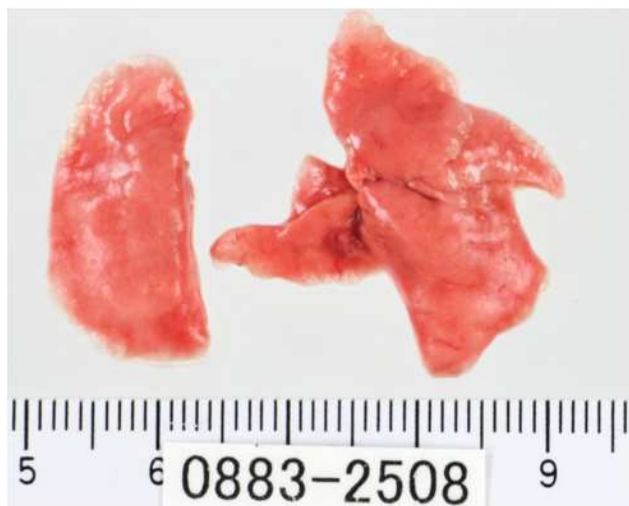
Photograph 26
Lung: Deposit of particle, BALT
Female, 8 mg/m³, Animal No. 2329



Photograph 27
High magnification of Photograph 25



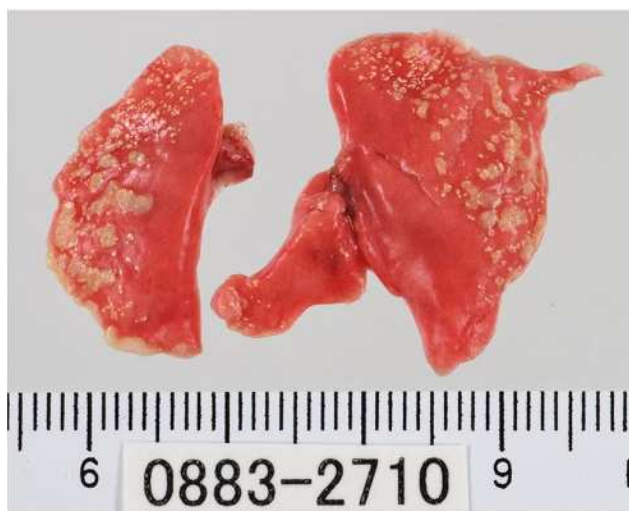
Photograph 28
Lung: Macroscopic representative image
Female, Control (52w+52w), Animal No. 2409



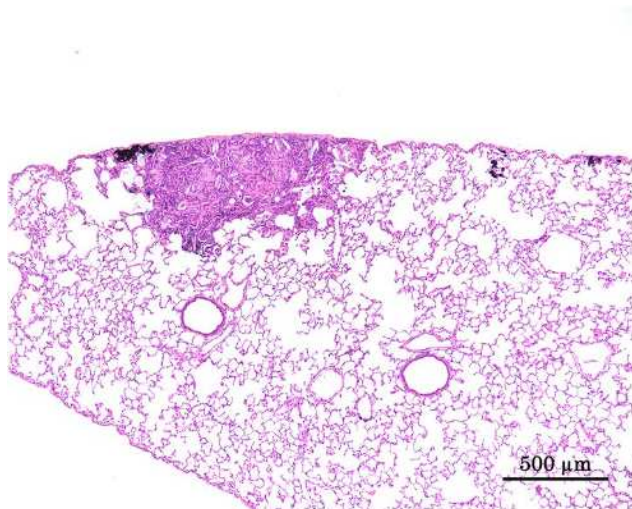
Photograph 29
Lung: Macroscopic representative image
Female, 0.5 mg/m³ (52w+52w), Animal No. 2508



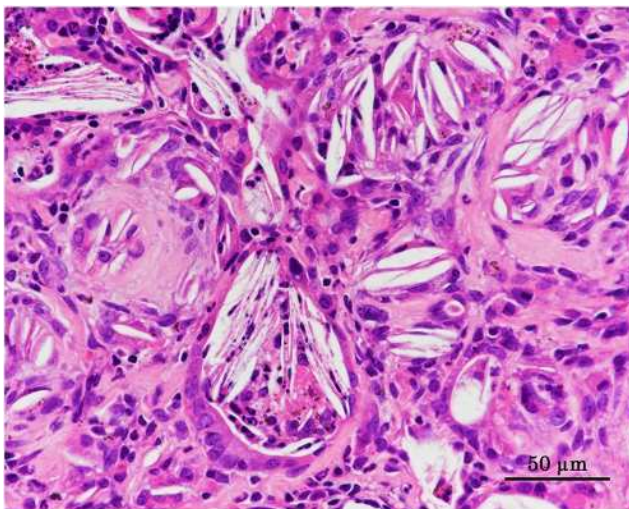
Photograph 30
Lung: Macroscopic representative image
Female, 2 mg/m³ (52w+52w), Animal No. 2609



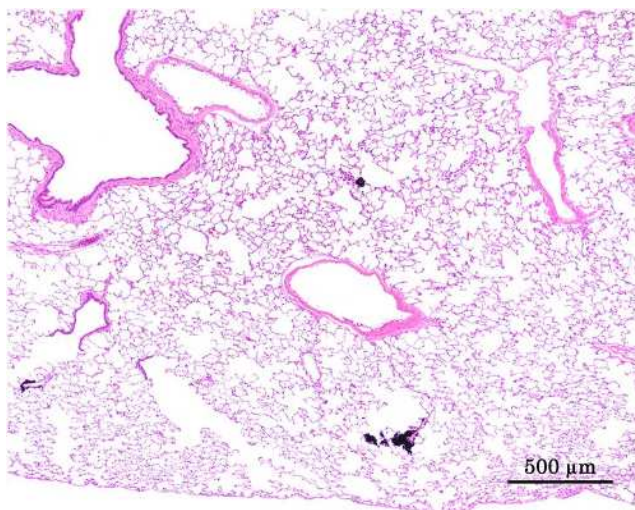
Photograph 31
Lung: Macroscopic representative image
Female, 8 mg/m³ (52w+52w), Animal No. 2710



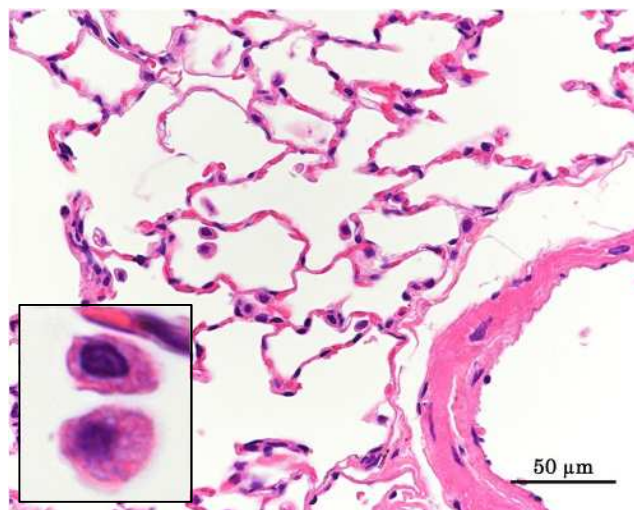
Photograph 32
Lung: Fibrosis, alveolar wall
Female, 8 mg/m³ (52w+52w), Animal No. 2710



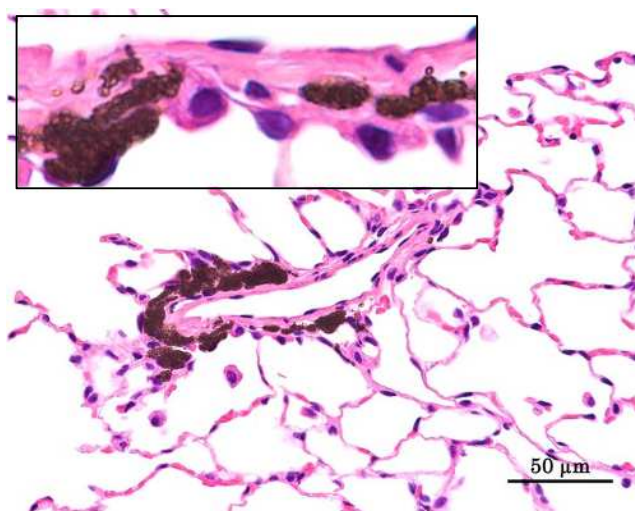
Photograph 33
High magnification of Photograph 31



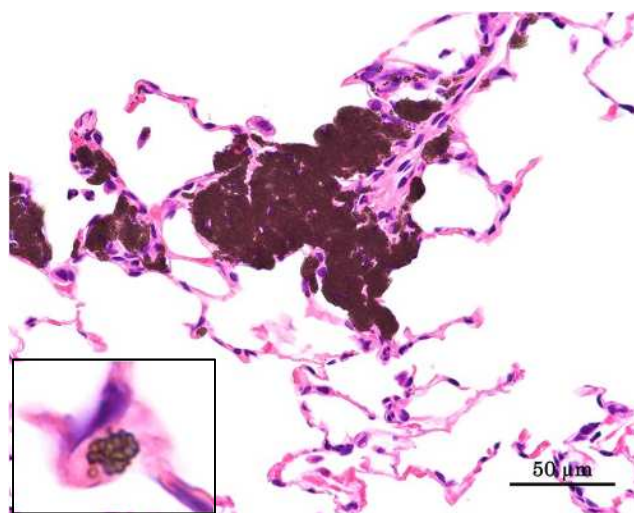
Photograph 34
Lung: Representative image in the alveolar region
Female, 8 mg/m³ (52w+52w), Animal No. 2710



Photograph 35
High magnification of Photograph 33



Photograph 36
High magnification of Photograph 33



Photograph 37
High magnification of Photograph 33