



Shortening or exempting quarantine period for arrivals who have a valid vaccination certificate

- With a valid vaccination certificate, you can **shorten your quarantine period of 14 days at home** or in the place you're staying if you are entering from
- “undesignated countries/regions”, whose travelers are **not** required to stay at the government-designated accommodation, or
 - “designated countries/regions”, whose travelers are **required** to stay for 3 days at the government-designated accommodation
- and report to the Ministry of Health, Labour, and Welfare (Health Monitoring Center for Overseas Entrants (HCO)) the negative test result (PCR Test or Quantitative Antigen Test) on or after the 10th day after entering Japan.
- With a valid vaccination certificate, you are **exempt from the 3-day stay at the government-designated accommodation** and the test on the 3rd day after entering Japan if you are entering from the “designated countries/regions”, whose travelers are **required** to stay for 3 days at the government-designated accommodation. **However**, you still need to stay at home or in the place you're staying during the designated quarantine period.
- ※ You must follow the instructions by the quarantine station or public health office, even if the above requirements are met.
- ※ The above measures are not applied to children who are not able to get vaccinated because of the age restriction.

Countries /regions you are from	A valid vaccination certificate	Day 0 (date of entry)	Days 1 to 3	Days 4 to 10	Days 11 to 14
(1)	NO	Test at quarantine	Stay at home or in the place you're staying		
	YES	Test at quarantine	<ul style="list-style-type: none"> • Stay at home or in the place you're staying (In case you choose not to take the test after 10 days after entering Japan) 		
	YES	Test at quarantine	<ul style="list-style-type: none"> • Stay at home or in the place you're staying • Take the test and report to the HCO the negative result on and after 10 days after entering Japan 	Quarantine period shortened with the notice from the HCO	
(2)	NO	Test at quarantine	<ul style="list-style-type: none"> • Stay at the government-designated accommodation • take the test on the 3rd day 	Stay at home or in the place you're staying	
	YES	Test at quarantine	<ul style="list-style-type: none"> • Stay at home, or in the place you're staying (exempt from staying at the government designated accommodation) (In case you choose not to take the test after 10 days after entering Japan) 		
	YES	Test at quarantine	<ul style="list-style-type: none"> • Stay at home, or in the place you're staying • Take the test and report to the HCO the negative result on and after 10 days after entering Japan 	Quarantine period shortened with the notice from the HCO	

【Countries/regions you stayed in】

- (1) “undesignated countries/regions”: Travelers **from this country/region** are **not** required to stay at the government-designated accommodation
- (2) “designated countries/regions”: Travelers **from this country/region** are required to stay for 3 days at the government-designated accommodation



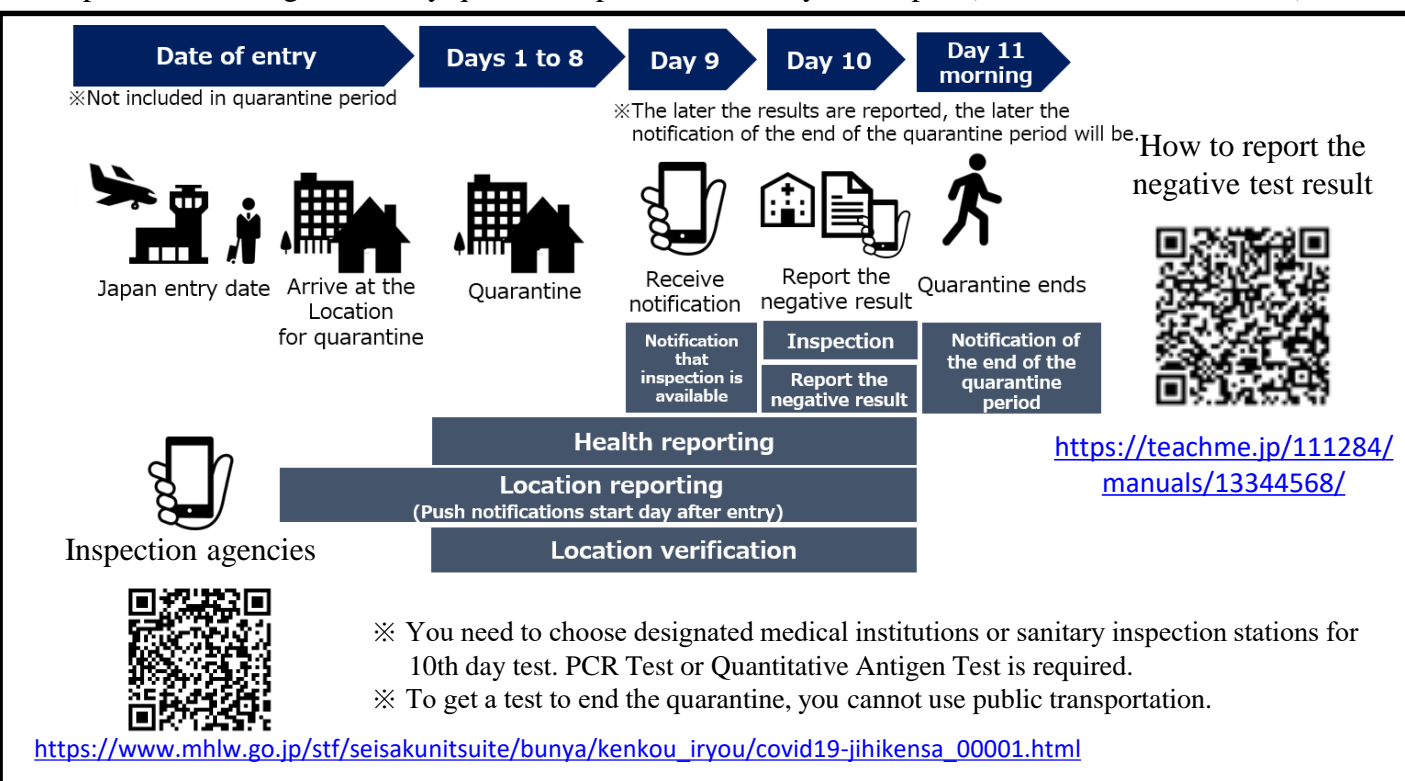
● Please submit a copy of the vaccination certificate to the quarantine station.

※ For an electric vaccination certificate, please ask the quarantine officer.

● The vaccination certificate is valid only if it meets the following criteria ① to ⑤.

①	<p>The certificate must be <u>issued by a public institution in a country or region listed in the attached table</u>.</p> <p>※ For a vaccination certificate issued in Japan, the following certificates or records are valid.</p> <ul style="list-style-type: none"> • Vaccination Certificate of COVID-19 issued by the Japanese government or local governments in Japan • Certificate of vaccination for COVID-19 issued by local governments in Japan • Record of vaccination for COVID-19 issued by medical institutions in Japan • Other certificates that are considered equivalent to documents listed above
②	<p><u>The following items must be listed in Japanese or English</u></p> <ul style="list-style-type: none"> • Name • Date of birth • Vaccine name/manufacturer • Date of vaccination • Doses of vaccines administered <p>※ If date of birth is not included in the certificate, other personal identification – e.g., passport number, could be an alternative to confirm the authenticity of the vaccination certificate.</p> <p>※ If the vaccination certificate is written in a language other than Japanese or English, it will be considered valid if it is accompanied by a Japanese or English translation and the contents can be identified.</p>
③	<p><u>The name/manufacturer of the vaccines administered must be one of the following.</u></p> <ul style="list-style-type: none"> • COMIRNATY / Pfizer • Vaxzevria / AstraZeneca • COVID-19 Vaccine Moderna / Moderna <p>※ Vaccine name/manufacturer above are those used in Japan.</p> <p>※ From 0:00hrs on October 12, 2021 (Japan time), Covishield vaccine manufactured by Serum Institute of India will be treated as identical to Vaxzevria vaccine manufactured by AstraZeneca.</p>
④	<p>You must be administered <u>at least 2 doses</u> of the vaccines listed in ③</p> <p>※ If you are administered 2 different types of vaccines, both vaccines must be listed in ③.</p>
⑤	<p>On the date of entry, <u>at least 14 days must have passed since the second dose of the vaccine was administered</u>.</p> <p>※ The day of the second dose does not count as one of the 14 days.</p>

● Steps for shortening the 14-day quarantine period after entry into Japan (For the shortest schedule)



Countries and regions

※ Applies from 0:00hrs on October 12, 2021 (Japan time)

<Attached Table>

No.	Countries and regions
	North America
1	Any area of the USA (CDC Card)
2	Northern Mariana Islands, the USA
3	New York State, the USA
4	New York City, the USA
5	Virginia State, the USA
6	Philadelphia City, Pennsylvania State, the USA
7	Maryland State, the USA
8	Louisiana State, the USA
9	Washington D.C., the USA
10	Washington State, the USA
11	Oregon State, the USA
12	Guam, the USA
13	California State, the USA
14	Arizona state, the USA
15	Alberta State, Canada
16	British Columbia State, Canada
17	Yukon Territory, Canada
18	Quebec State, Canada
19	Ontario State, Canada
20	Newfoundland and Labrador State, Canada
21	New Brunswick, Canada
22	Manitoba, Canada
23	Saskatchewan, Canada
24	Nova Scotia, Canada
25	Northwest Territories, Canada
26	Nunavut Territory, Canada
	Europe
27	Ireland
28	Andorra
29	Italy
30	The United Kingdom
31	Estonia
32	Austria
33	The Netherlands
34	Cyprus
35	Greece
36	Croatia
37	Switzerland
38	Sweden
39	Spain
40	Slovakia
41	Slovenia
42	The Czech Republic

No.	Countries and regions
43	Denmark
44	Germany
45	Hungary
46	Finland
47	France
48	Bulgaria
49	Belgium
50	Poland
51	Portugal
52	Malta
53	Latvia
54	Lithuania
55	Romania
56	Luxembourg
57	Kosovo
58	Belarus
	Asia
59	Indonesia
60	Singapore
61	Sri Lanka
62	Thailand
63	Vietnam
64	Hong Kong
65	Malaysia
66	Maldives
	Oceania
67	Samoa
68	Palau
69	Papua New Guinea
	Latin America and the Caribbean
70	Ecuador
71	Costa Rica
72	Belize
73	Paraguay
74	Honduras
	Middle East and Africa
75	Tunisia
76	Turkey
77	Lebanon
78	Gabon
79	Japan