

EBOLA VIRUS DISEASE

Republic of Uganda



Situation Report 40

Data update as of 31st October 2022 at 22 :00 HRS

Districts with confirmed cases

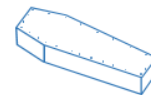


- Mubende
- Kassanda
- Kyegegwa
- Bunyangabu
- Kagadi
- Wakiso
- Kampala



Confirmed Cases

New: 01
Total: 130



Confirmed Deaths

New: 06
Cumulative: 43



Recoveries

New: 02
Cumulative: 45



Contacts

Districts: 08
Active contacts: 1,777
Follow-up Rate: 87%



Healthcare Worker Infections

New: 00
Dead: 06
Cumulative: 18

Key Highlights

On 20th September 2022, the Ministry of Health declared an outbreak of Sudan ebolavirus (SVD) after a case managed at Mubende Regional Referral Hospital (MRRH) in Mubende district was confirmed through testing at the Uganda Virus Research Institute (UVRI). This followed investigations by the National Rapid Response Team of suspicious deaths that had occurred in the district earlier in the month. This is the first time in more than a decade that Uganda reports an outbreak of Sudan ebolavirus.

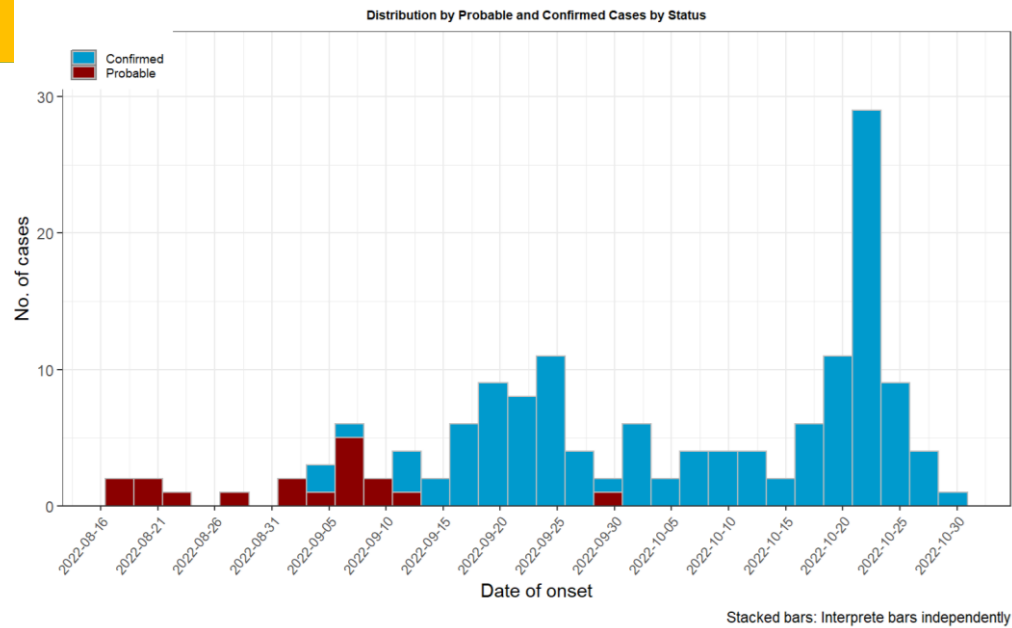
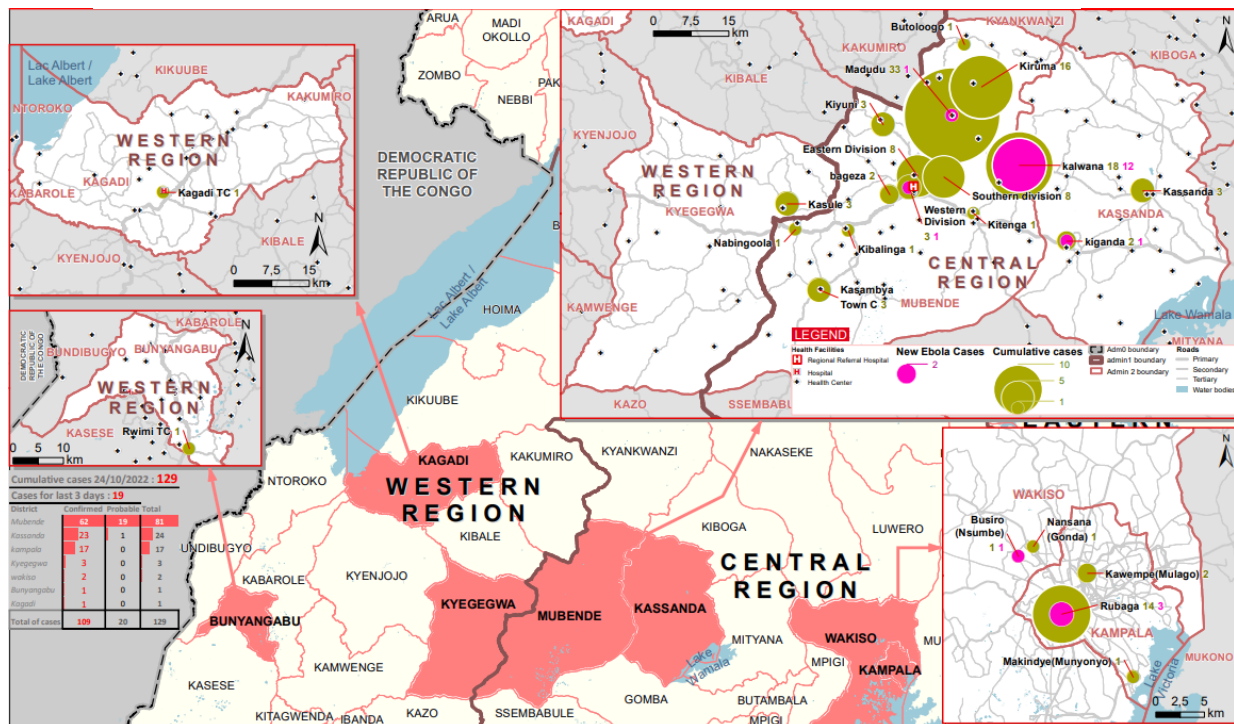


Figure 1: Time analysis of affected individuals

- Today marks 42 days of response to the EVD outbreak, first case was confirmed on 19-Sep-2022.
- One newly confirmed EVD case from Kassanda in the past 24 hours, linked to a known case.
- Six newly confirmed deaths in the past 24 hours – five from Mubende, one from - Entebbe ETU.
- Two new recoveries in the past 24 hours, bringing cumulative recoveries to 45.
- Case Fatality Ratio (CFR) among confirmed cases is 43/130 (33%).
- A total of 1,777 contacts actively being followed-up in ten districts, follow-up rate in the past 24 hours was 87%.

Figure 2: Place analysis of affected persons by district and sub-county



**Summary of Confirmed Cases and probable deaths by Sub-County as of 31st October 2022
at 22:00 HRS**

<i>District (N=7)</i>	<i>Sub-county (N=26)</i>	<i>Confirmed cases (N=130)</i>	<i>Confirmed deaths (N=43)</i>	<i>Probable cases* (N=21)</i>	<i>Recoveries (N=45)</i>
<i>Bunyangabu</i>	Rwimi TC	01	00	00	01
<i>Kagadi</i>	Kagadi TC	01	01	00	00
<i>Kampala</i>	Kawempe	02	00	00	00
	Makindye	01	00	00	01
	Rubaga	14	02	00	03
<i>Kassanda</i>	Gomba	01	01	00	00
	Kalwana	25	07	00	01
	Kassanda	05	00	02	02
	Kiganda	03	00	00	01
	Kikandwa	06	03	00	00
<i>Kyegegwa</i>	Kasule	04	01	00	02
<i>Mubende</i>	Bagezza	02	02	00	02
	Butologoa	01	01	00	00
	Eastern Division	09	01	00	06
	Southern division	07	03	01	04
	Western Division	03	01	00	02
	Kasambya	05	02	00	02
	Kiruuma	10	04	05	06
	Kirwanyi	02	00	00	00
	Kiyuni	03	03	00	00
	Madudu	21	10	13	11
	Kibalinga	01	01	00	00
Kitenga	01	00	00	01	
<i>Wakiso</i>	Busiro	01	00	00	00
	Nansana	01	00	00	00

Data harmonisation is an on-going process as patient classification changes between admissions, recoveries and fatalities.

**All probable deaths reported as occurring before 20th September 2022.*

Case Management summaries as of 31st October 2022 at 22:00 HRS

Updated 31Oct22 at 22:00 HRS

MUB MAD ENT MUL Total

Bed Capacity	# of beds in the Isolation Unit	64	08	-	120	192
	# of ETU beds	48	-	67	-	115
Bed Occupancy	# of beds occupied in the Isolation Unit today	35	07	00	30	72
	# of beds occupied in the ETU today	28	-	12	00	40
Admission	# of suspect cases admitted to the Isolation Unit today	10	06	00	01	17
	# of Cases admitted to the ETU today	01	-	00	-	01
	# of walk in patients to the isolation Unit	00	-	00	-	00
Severity	# of Mild cases in the ETU today	00	-	09	-	09
	# of Critical cases in the ETU today	08	-	03	-	11
Discharge	# of patients discharged from the ETU	01	-	02		03
	# of patients discharged from the Isolation Unit	39	01	-	04	44
Death	# of suspect cases that died in the Isolation Unit	00	00	-	00	00
	# of patients that died in the ETU	05	-	01	-	06

Table Acronyms: MUB = Mubende RRH, MAD = Madudu HCIII, EBB = Entebbe RRH, MUL = Mulago NRH

Contact Tracing, Alert Management, EMS and SDB summaries as of 31st October 2022 at 22:00 HRS

Updated 31Oct22 at 22:00 hrs	Last 24 Hours													
	MUB	KAS	KAK	KYE	KMA	NAK	MTN	MTM	Total					
Contacts listed	0	29	0	2	2	0	11	0	44					
Contacts completed 21 days of follow-up	61	0	0	0	0	2	0	0	63					
Contacts under active follow-up	641	616	8	13	401	0	82	16	1,777					
Contacts followed-up today (% follow-up rate)	621 (97)	519 (84)	8 (100)	13 (100)	281 (70)	0	82 (100)	16 (100)	1540 (87)					
Number of Contacts developing symptoms	1	2	0	0	0	0	0	0	3					
Number of Contacts evacuated	1	1	0	0	0	0	0	0	2					
Signals / Calls received	92	92	0	1	10	0	17	0	212					
Alerts received	42	92	0	1	19	0	17	0	171					
Alerts verified (%)	42 (100)	92 (100)	0	1 (100)	10 (100)	0	17 (100)	0	171 (100)					
Alerts meeting suspect case definition	21	14	0	0	8	0	0	0	43					
Alerts evacuated	9	10	0	0	0	0	0	0	19					
SDB death alerts	6								6					
SDB undertaken - Community burials	5								5					
- Backlog cases today	1								1					
- Samples collected from deaths	5								5					
Samples collected	16	22	0	0	5	0	0	0	43					
EMS Ambulance fleet	13	11							24					
EMS alerts handled	38	59			0				97					
EMS evacuations - ALL	32	41			0				73					
- to ED	7	15							22					
- to ETU	1	7							8					
- to Madudu	0	12							12					
- Psychosocial, mental	8	11							19					
- declined	6	2							8					
Triage Category - Red	5	3							8					
- Yellow	5	16							21					
- Green	5	22							27					
	Cumulative													
	MUB	KAS	FPC	KYE	KAG	KAK	KMA	LUW	NAK	NTG	MTN	MTM	BUN	
Contacts listed	2183	741	3	71	23	75	429	5	8	20	82	15	48	3,703
Contacts completed 21 days of follow-up	1509	98	3	55	23	58	28	5	8	20	3	0	48	1,858
SDB death alerts	147													
SDB undertaken - Community burials	97													97
- Healthcare facility deaths	46													46

Table Acronyms: MUB=Mubende, KYE=Kyegegwa, FPC= Fort Portal City, KAS=Kassanda, KAG=Kagadi, KMA = Kampala Metropolitan (Kampala and Wakiso), BUN = Bunyangabu, KAK = Kakumiro, NAK = Nakasongola, LUW = Luweero, MTN = Mityana, MTM = Mitooma, NTG = Ntungamo

Actions to date

The Ministry of Health (MoH), Districts, and partners in Uganda are implementing several outbreak control interventions in Mubende and her surrounding districts to contain the disease spread. An overview of key activities is summarized below:

Response Pillar	Key Updates in the past 24 hours
<p><i>Coordination</i></p>	<ul style="list-style-type: none"> ➤ Daily DTF and IMT-specific meetings within all affected districts; NTF scheduled thrice a week. ➤ Total contacts under follow up within the past 24-hours are 1,777 within eight districts. Follow up rate for contacts is at 87% ➤ Total alerts validated within the past 24-hours were 171, of which 43 met the suspected case definition and 19 were evacuated.
<p><i>Surveillance and Contact tracing</i></p>	<ul style="list-style-type: none"> ➤ Team Mityana oriented 22 DHT remembers and Health unit in-charges on EVD control concepts; oriented VHTs in Kalangalo SC-162 and Taamu division-118 in Event Based Surveillance (EBS), Community Based disease surveillance (CBDS) and EVD surveillance. Cumulatively 638 VHTs and LC1s have been oriented in EBS, CBDS and EVD surveillance ➤ One alert received from one category #3 district: Mpigi (01), which tested NEGATIVE for EVD (SUD)

<i>Response Pillar</i>	<i>Key Updates in the past 24 hours</i>
<i>Laboratory</i>	<ul style="list-style-type: none"> ➤ Strengthened coordination between lab, surveillance and EMS for timely sample collection and filling of CIFs ➤ Timely sample collection upon receipt of filled CIFs, timely sample testing and release of test results, adequate test kit at testing laboratories ➤ Team Mityana re-oriented eight Lab technicians on the collection and packaging of samples ➤ Total of 45 samples processed at UVRI and Mubende mobile lab within the past 24 hours ➤ Team Mubende held one meeting with the MOH Commissioner for Clinical services where staffing gaps were reviewed and strategies put in place
<i>Case Management</i>	<ul style="list-style-type: none"> ➤ Cohort #3 of the Case Management training commenced today - officially opened by the Mubende RRH director, with 45 participants.
<i>Emergency Medical Services</i>	<ul style="list-style-type: none"> ➤ A total of 32 evacuations done in Mubende and 41 in Kassanda.
<i>Safe and Dignified Burials</i>	<ul style="list-style-type: none"> ➤ Conducted five safe and dignified burials in Mubende and Kassanda within the past 24 hours and collected five samples. ➤ One backlog case in the past 24 hours - alert received past 18:00 hrs.
<i>WASH and Infection Prevention and Control (IPC)</i>	<ul style="list-style-type: none"> ➤ Team Mubende oriented 24 staff on IPC in a hotel where EVD responders reside and strengthened hand hygiene Laundry, community IPC, temperature monitoring, staff safety, environmental cleaning and disinfection. ➤ Team Mityana conducted IPC assessment and mentorship in two Health facilities (Supreme Medical clinic and Ssingo clinic) ➤ Dispatched a team of three mentors to assess IPC in private facilities in Madudu sub county. ➤ Decontaminated all the places the confirmed cases assessed in the Kassanda RING area including Healthcare facilities, clinics, drug shops, schools, churches, mosques homes and traditional healers homesteads. Today, two healthcare facilities, five homes and two communities were disinfected. ➤ Kassanda IPC team supported IPC RING activation scorecard assessment and mentorship, HCF/ community briefers, IPC/WASH kit provision, HCW/community exposure risk assessment.
<i>Risk Communication</i>	<ul style="list-style-type: none"> ➤ Team Mityana oriented 13 security officers (GISOs, PISOs) on EVD; oriented the District Risk Communication team (10 members) and issued 210 IEC materials ➤ Radio talk shows ongoing on one Mityana local radio station ➤ Three mobile audio systems mobilized communities in sub-counties of Kiyuni, Kitenga, Kibalinga and south division in Mubende and one in Kassanda while two film vans mobilized communities in Nabgondo, Kyamasansa, Bbinikila, Lwankonge, Buswa, Kaamyalo, Magwa & Kalwaana. ➤ A total of 15 radio messages continue to be aired through five radio stations while ten community audio towers are disseminating EVD messages in the ten hotspots in Mubende and ten radio spot messages in Kyegegwa. ➤ Three Radio talk shows conducted (2 Mubende FM & Heart FM and 1 on Britop radio Kyegegwa) guest speakers were LC5 chairperson & secretary for production and with RDC & DPC food relief. ➤ A total of 418 EVD posters distributed in Bunyangabu targeting schools, business communities
<i>Social Mobilisation</i>	<ul style="list-style-type: none"> ➤ Team Mityana completed mapping of shrines for traditional healers (five more identified today) and orienting them in EVD control activities ➤ RCCE team in Kagadi conducted a dialogue meeting attended by 30 (3 Females, 27 Males) for community leaders in Nyanswa, Butawulira, Mairirwe sub-county, where a suspect case had spent over a week in the community.
<i>Community Engagement</i>	<ul style="list-style-type: none"> ➤ The community volunteers and VHTs conducted house to house mobilization and sensitization 5 districts where 2,653 households were visited and reached 4,102 (2,150 males, 1,952 females) with EVD prevention messages. ➤ Health talk at Kibiito HC IV OPD reached 56 (23 males and 33 females) with these messages on EVD prevention, case definition and IPC in Bunyangabu. ➤ Conducted EVD orientation to 47 (12 males, 35 females) saloon operators, Hotel managers, Bar managers and workers in Kassanda. ➤ RCCE subcommittee engaged 5 school including in 2 Bunyangabu, 3 in Mubende with one Nursing school (Answered prayers) and discussed on EVD prevention and reporting of suspected cases in school and their

<i>Response Pillar</i>	<i>Key Updates in the past 24 hours</i>
<i>Mental Health and Psychosocial Social Support</i>	<p>homes. A total of 1318 (1306 males, 881 females, 23 teachers/tutors (12 males, 11 females) and 24 none teaching staff (10 females, 14 males) at Answered prayers Nursing school.</p> <ul style="list-style-type: none"> ➔ RCCE team in Kagadi engaged St. Mary's Catholic church Kagadi, reached about 300 people (140F; 90M; 70 children) and Chain Deliverance Ministries where 85 (40Females; 25Males and 20 children) were reached with EVD prevention messages and reporting of alerts. ➔ Team Mubende provided Psychosocial support to six hotel staff who served breakfast to survivors thinking that these are EVD cases. ➔ Team Mityana offered psychosocial support to the 64 contacts under follow-up. ➔ Provided supportive counseling to eight confirmed and two clients from suspect wing in Mubende. ➔ One survivor and two discharged clients from suspected ward were united with families; prepared 15 discharged clients from emergency ward for discharge, 22 discharged clients from Madudu were escorted back home.

Critical Challenges listed

- ➔ Myths and misconceptions and low EVD risk perception still exist within some of the affected communities.
- ➔ Human resource and IPC supplies challenges in light of increasing community-based evacuations and admissions as well as need to expand suspect case isolation

Key messages to the public

- ➔ People in the community should call an alert hotline or go to a health facility if they have symptoms (e.g., fever, headache, weakness, vomiting, bloody diarrhoea or urine, bleeding from body openings).
- ➔ Current hotline numbers for Mubende are: **0800200043 (Toll-free), 0762640374, 0762640379, 0708062203, 0702869375, 0708052008, 0762659215 (Not toll-free)**. For Kampala Metropolitan Area: **0800 299000 (toll-free), 0756979282, 0782160174, 0780384997, 0771414202 (non-toll free)**. Bunyangabu: **0787437139**
- ➔ Free alert SMS on **6767** starting with the 'ALERT' key word; Free alert SMS to U-report on 8500
- ➔ Community should not fear people who have been discharged from the ETU and returned home.