

# Attention travelers coming from **Angola**



## Important Information

# There is an outbreak of **Yellow Fever!**

**If you are concerned and you are exhibiting symptoms, such as a fever, report to the Quarantine Station upon entering Japan**

If you are concerned that you may have been bitten by a mosquito on your travels, and you are exhibiting symptoms, please seek consultation at the Quarantine Station upon returning to Japan.



**Yellow Fever is caused by a bite from a mosquito that is carrying the Yellow Fever Virus.**

**If you are concerned after your return to Japan, seek guidance at local health center**

If you are concerned after entering Japan, please seek consultation at your local health center.

**Additionally, if you are exhibiting symptoms, and you seek treatment at a clinic or hospital, it is essential that you report that you have travelled overseas.**

For more information →

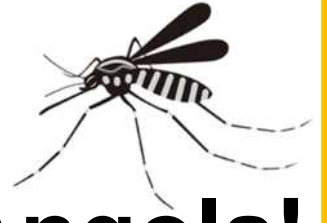
**Quarantine Station Website FORTH**  
<https://www.forth.go.jp/useful/yellowfever.html>



FORTH Yellow Fever



# There is an outbreak of **Yellow Fever** in Angola!



There have been numerous people infected with Yellow Fever in southern Africa, primarily Angola, beginning in December 2015.

Individuals who have **not** been vaccinated, **have been bitten by a mosquito during their travels, and are exhibiting symptoms, such as a fever, should speak to a Quarantine Officer.**

If you are concerned after your come to Japan, seek guidance at your local health center.

Additionally, **if you are exhibiting symptoms, and you seek treatment at a clinic or hospital, it is essential that you report that you have travelled overseas.**

## What is Yellow Fever?

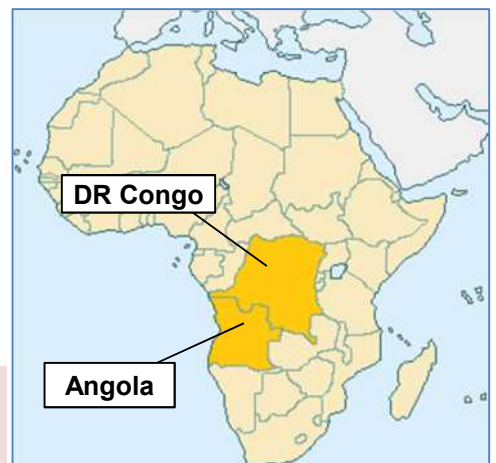
Yellow Fever is transmitted through the bite of an infected mosquito, and the primary symptoms are **fever, headache, chills, muscle pain, back pain, nausea, vomiting.**

Additionally, some patients may exhibit more severe symptoms, which, if not treated properly, **may lead to death.**

## For more information...

**Quarantine Station Website FORTH**  
<https://www.forth.go.jp/useful/yellowfever.html>

FORTH Yellow Fever



Countries with an outbreak as of May 19, 2016